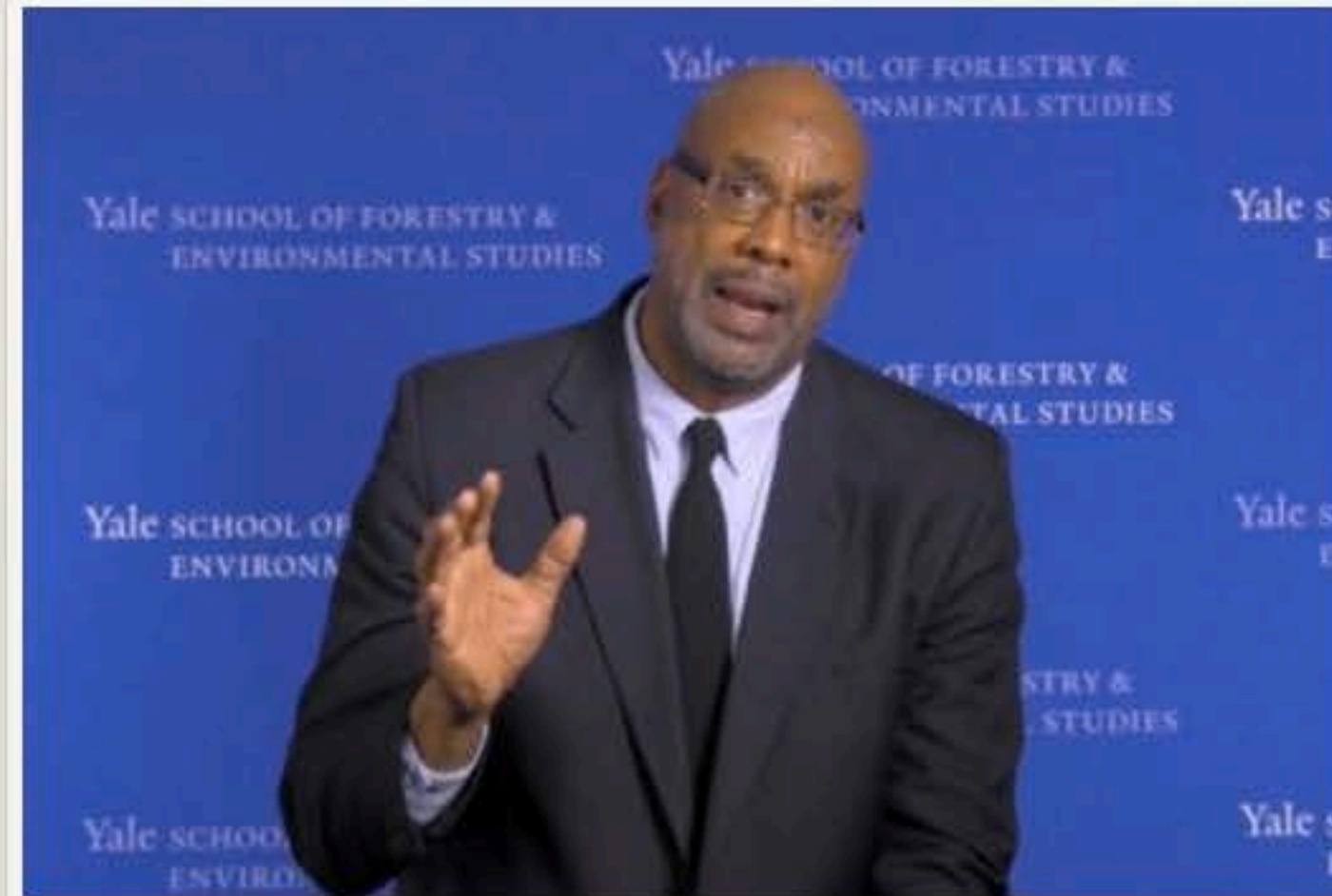


[ADMISSIONS](#)[ACADEMICS](#)[RESEARCH](#)[OUTREACH](#)[CAREERS](#)[ALUMNI](#)[GIVING](#)[ABOUT](#)

Ecologist Indy Burke Named F&ES Dean

Dean's Office



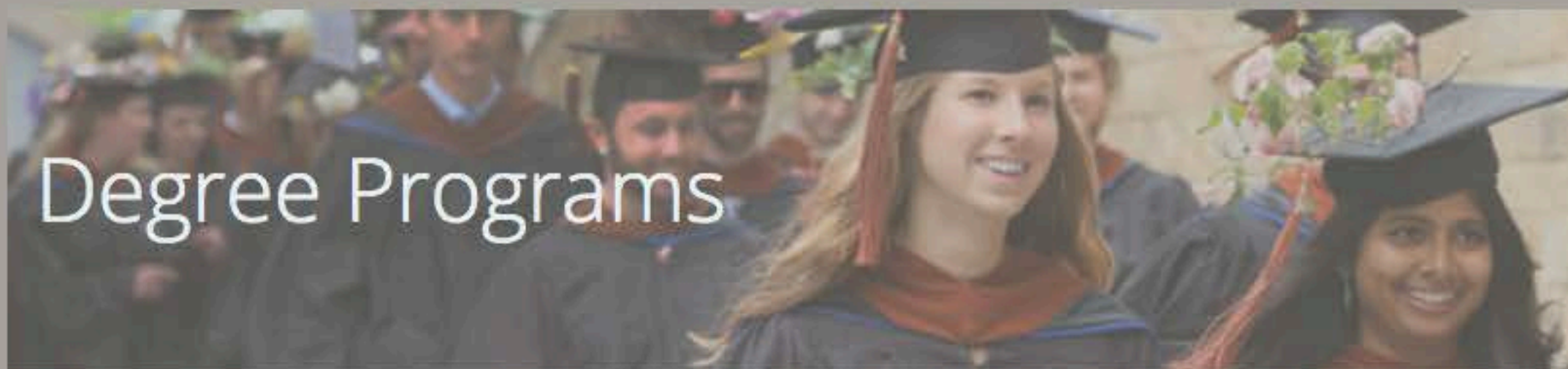
Video: Diverse Voices and Environmental Leadership

Dean's Office



Study Reveals Surprising Role of Haze in the Warming of Chinese Cities

Yale School of Forestry and Environmental Studies



Degree Programs

MEM

MF

MFS

MESc

12 Joint Degrees

Mid-Career Masters

Yale College 5 Year Program

PhD

[APPLY NOW](#)

Study Reveals Surprising Role of Haze In the Warming of Chinese Cities



A new Yale-led study suggests that regional variations may cause the phenomenon known as the urban heat island effect, and that the impacts of haze pollution in the U.S. and China vary significantly.



Hung Chung Chih via Shutterstock

A new Yale-led study published in the journal *Nature Communications* sheds light on the surprising role that haze in China plays in promoting the urban heat island effect [UHI], a process whereby city centers

tend to be significantly warmer than surrounding rural areas.

Scientists have always suspected that aerosol particles, or haze, played a role in amplifying UHI, said **Xuhui Lee**, the Sara Shallenberger Brown Professor of Meteorology at the Yale School of Forestry & Environmental Studies [F&ES] and senior author of the study. Now, they have evidence that in China — unlike the U.S. — haze is a significant driver of UHI.

The study also highlights the paradoxical nature of haze, and the challenges scientists face in isolating its effects on climate change. Smaller aerosol particles that pose public health risks such as asthma actually cool surfaces and reduce UHI by blocking sunlight. But larger aerosol particles radiate heat in the form of long-wave radiation, thus increasing local temperatures.

“When people talk about aerosols, particle size matters a lot,” Lee said.

Previous research by Lee and his colleagues showed that UHI in the U.S. and Canada appears to be driven by a lack of vegetation, especially trees, which are highly effective in dissipating heat through convection. But when they attempted to replicate their experiment in China, the model performed poorly.

“When people talk about aerosols, particle size matters a lot.”

— Xuhui Lee

At first they thought it was due to the structure of Chinese cities, where there is more vertical stacking as opposed to the sprawling nature of cities in the U.S. Instead, they found a strong correlation between the amount of haze and an increase in heat: cities with more haze pollution had an amplified urban heat island effect.

Even more surprising, they found the greatest UHI in midwestern and northwestern small to mid-sized cities, not in the massive cities located along China’s east coast.

China’s semiarid midwestern and northwestern cities have more large aerosol particles due to road dust and coal combustion that create a thick haze layer and result in a net warming of about one-degree

Celsius. Lee even speculates that stir-fry cooking contributes to the UHI.

The study also reveals the ways in which local factors can affect the spatial patterning of UHI. For example, although many parts of the U.S. have air pollution problems that affect respiratory health, researchers couldn't find a correlation between UHI and haze in the U.S., possibly because aerosol particles here are too small to create a warming effect. Here, the highest UHI is found in wet climates — especially southeastern cities such as Atlanta — posing public health risks and management challenges for city administrators in the face of climate change.

There are several important implications of this research, Lee said. The first is that aerosol pollution must be reduced. “Cleaning up has a co-benefit,” he said. “It helps improve human health, but it also helps to cool the local climate.”

“Cleaning up has a co-benefit. It helps improve human health, but it also helps to cool the local climate.”

— Xuhui Lee

Second, researchers must improve the ability of models to quantify the effects of aerosols on climate change. According to Lee, most climate models don't actually calculate the long-wave radiation at the ground, or heat, produced by haze pollution. Other models only measure land surface properties, such as the effects of removing vegetation on local climate.

“That's one of the frontiers in climate change prediction,” Lee says. “There's a whole gap in our theory and methodology, so we tried to quantify that, not just to describe with empirical evidence. We tried to propose a framework to close this knowledge gap.”

Chang Cao, the first author of the study, is a visiting doctoral student at Yale from Nanjing University of Information, Science and Technology, Nanjing China.

Original Paper:

Cao, Chang; Lee, Xuhui; Liu, Shoudong; Schultz, Natalie; Xiao, Wei; Zhang, Mi; and Zhao, Lei. “Urban heat islands in China enhanced by haze pollution.” *Nature Communications*

– **Timothy Brown** timothy.brown@yale.edu 203 436-9503

Share this page:



PUBLISHED: August 23, 2016

Stay up-to-date with F&ES!

Subscribe to an F&ES newsletter...

Weekly Newsletter

 [Subscribe - WEEKLY](#)

ADMISSIONS

Why Yale?
Masters
Doctoral
Financial Aid
Admission Events
Apply!

ACADEMICS

Courses
Degree Programs
Pro. Practice
Faculty
Student Resources
Academic Calendar

RESEARCH

Faculty
Centers/Programs
Partnerships
Research News

OUTREACH

Centers/Programs
Publications
Partnerships
Events
Videos
Social Media
Blog

CAREERS

for Employers
for Students
for Alumni
Employment Data

ALUMNI

Networking
Alumni Review
Reunion
Transcripts

